

EAST AFRICA



THERE IS A **STRONG CORRELATION** BETWEEN

HIGH CONCENTRATION OF BIODIVERSITY HOTSPOTS

& THE BURDEN OF EMERGENT INFECTIOUS DISEASE IN THE REGION



THE REGION HAS DEVELOPED ITS **PANDEMIC PREPAREDNESS CAPACITIES**

- STRONG SURVEILLANCE SYSTEM
- PUBLIC HEALTH PERSONNEL TRAINING
- NEW FACILITIES



Dr. Julius Lutwama
DEPUTY DIRECTOR,
UGANDA VIRUS RESEARCH INSTITUTE

LACK OF SUSTAINABLE FUNDING FOR R&D



LIMITED **BIO-TECHNOLOGY**

GOOD PRACTICES

SUPPRESSION OF A YELLOW FEVER OUTBREAK SUPPORTED BY **NATIONAL AND REGIONAL NETWORKS & PARTNERSHIPS**

KEMRI

UVRI



MRC UVRI



LSHTM

THERE IS AN **EFFICIENT SYSTEM** TO SUPPORT THE PACKING AND SHIPPING OF SAMPLES

STRONG COMMUNITY HEALTH SYSTEM BASED ON RESPONSES TO OUTBREAKS

CAPACITY BUILDING

LOCAL GOVERNMENT EFFORTS STIMULATE DEVELOPMENT OF IN-COUNTRY EARLY-STAGE VACCINE KNOWLEDGE BASE

CHALLENGES

LOAN FINANCE MECHANISM IMPAIRS THE REGION'S ABILITY TO SELF FUND

POLITICAL INSTABILITY

IMMATURE REGULATORY LANDSCAPE



IS A BARRIER TO ACCESS TO COUNTER-MEASURES

CONFLICT COUNTRIES

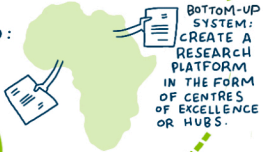


TRUST BUILDING INVOLVING COMMUNITIES AND POLICY-MAKERS

THE GLOBAL SUPPORT SHOULD BE DESIGNED TO:

CONNECTING THE GLOBAL AND REGIONAL

SUPPORT INTER-REGIONAL CAPACITY BUILDING IN THE CONTINENT AS A WHOLE



BOTTOM-UP SYSTEM: CREATE A RESEARCH PLATFORM IN THE FORM OF CENTRES OF EXCELLENCE OR HUBS.

PROMOTE REGIONAL COLLABORATION